

# **Network Management Card**

**~Quick Installation Guide~**

# Network Management Card Hardware Installation:

1. Insert Card into the slot provided by UPS,  
put the screws and tighten them.
2. Procure a Windows computer.
3. Use the RJ45 to DB9 female serial cable that provided  
from package connects between the NMC COM port  
and the COM port on the workstation.

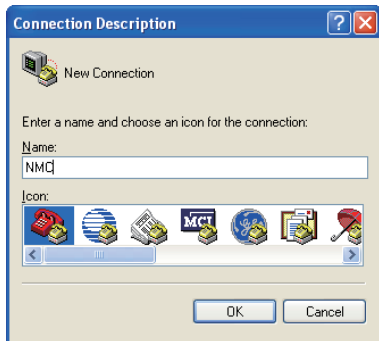


# Configuring Network Management Card via Serial Port

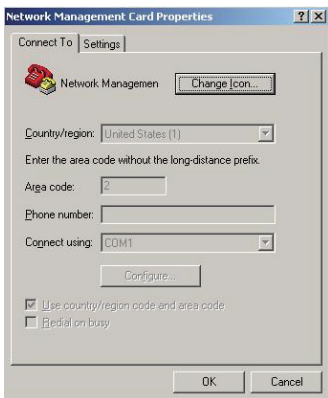
1. In Microsoft Windows click  
Start -> Programs -> Accessories -> Hyper terminal.



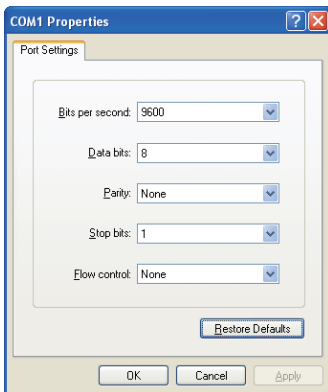
2. Enter a name and click OK.



3. Select the correct COM port and click OK.



4. Configure the port setting as 9600 bps, 8 data bits, None (parity), 1 Stop bit and None Flow Control. Then click OK.



5. Enter the default password “password” and the Network Management Card Configuration Menu will display on the screen.

NMC Version x.x.x.x

```
+=====+
|               Network Management Card Configure Menu               |
+=====+
```

Password: \_

6. Enter “1” to enter the Agent Configuration Menu.

```
+=====+
|               Network Management Card Configure Menu               |
+=====+
1. IP Configurations
2. Pass Through
3. Reset Configuration to default
4. Restart
5. Change Password
0. Exit
```

Please Enter Your Choice :

7. Assign an IP address and set the correct Subnet Mask; Gateway; DHCP.

Please Enter Your Choice : 1

```
+=====+
|               IP Configure Menu               |
+=====+
MAC Address : 00:20:85:F7:10:1F
1. DHCP      : Enable
IP address   : 172.18.127.45
Subnet mask  : 255.255.255.0
Gateway      : 172.18.127.1
Primary DNS address : 172.18.121.17
Secondary DNS address : 151.110.232.21
7. IPv6 Configure
0. Return to previous menu
```

Please Enter Your Choice : \_

# Control the Network Management Card/UPS via Web Browser

Start your Web Browser; enter the Network Management Card IP address in the Address text box, the Network Management Card Web page will be shown on the Browser.

Some setting pages need to enter the user name and password to log in. The default user name is “root” and default password is “password”.

The screenshot shows a Microsoft Internet Explorer window displaying the 'Network Management Card for UPS' web interface. The browser's address bar shows 'http://172.16.127.52/'. The interface has a blue header with the title 'NETWORK MANAGEMENT CARD FOR UPS' and a timestamp 'ON-LINE Location: Office 15/11/2011 11:18:45'. A left sidebar contains a menu with categories like 'UPS Monitoring', 'UPS Identification', 'UPS Management', 'Settings', 'Logs', and 'File Management'. The main content area is titled 'UPS Monitoring - UPS Status' and contains a table of real-time data.

| UPS Monitoring - UPS Status |                | <a href="#">help</a> |
|-----------------------------|----------------|----------------------|
| <b>UPS Status</b>           |                |                      |
| UPS Temperature             |                | Line 34.9 °C         |
| <b>Input</b>                |                |                      |
| Voltage                     | 224.5 V        |                      |
| Frequency                   | 50.0 Hz        |                      |
| <b>Output</b>               |                |                      |
| Load(%)                     | 0              |                      |
| Voltage                     | 221.5 V        |                      |
| Frequency                   | 50.1 Hz        |                      |
| Current                     | 0.3 A          |                      |
| Watt                        | 0 W            |                      |
| <b>Battery</b>              |                |                      |
| Status                      | Battery Normal |                      |
| Capacity(%)                 | 100            |                      |
| Voltage                     | 40.6 V         |                      |
| Time On Battery             | 0 S            |                      |
| Backup Time                 | 20880 S        |                      |

# EMP Connection(optional)

The Environment Monitor Probe is a NMC option. It monitors the temperature and humidity of the UPS environment, and check the states of two external contacts. It can also send alarms (email, trap) by pre-set thresholds. Connection is made via the setting port on the NMC, the EMP is detected automatically. Configuration could be made via UPS configuration menu.

Network Management Card - Windows Internet Explorer

http://172.18.127.45/authenticity\_ah.html

File Edit View Favorites Tools Help

Network Management Card

NETWORK MANAGEMENT CARD FOR UPS

OW-LINE  
Location: Office  
01/01/2000 00:22:00

UPS Management > UPS Configuration

UPS

Over Load Set Point(%) 50

Over Temperature Set Point(°C) 50

Save

EMP

Sensor Description Low Point High Point

Temperature(°C) EMP Temperature 15 50

Humidity(%) EMP Humidity 50 90

Alarm-1 Alarm-1 Not Used

Alarm-2 Alarm-2 Not Used

Save

UPS Monitoring

- UPS Status
- UPS Alarm
- UPS Parameters
- UPS Powered Devices
- UPS Identification

UPS Management

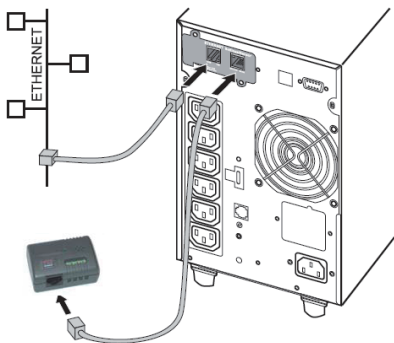
- UPS Battery Test
- UPS Battery Test Schedule
- SNMP TRAP Receivers
- UPS Configuration
- UPS Control
- UPS Shutdown
- Shutdown Schedule

Settings

- NMC System
- Reboot System
- Date and Time
- SNMPv3 User Table
- Email Notification
- Firmware Upload
- File Management

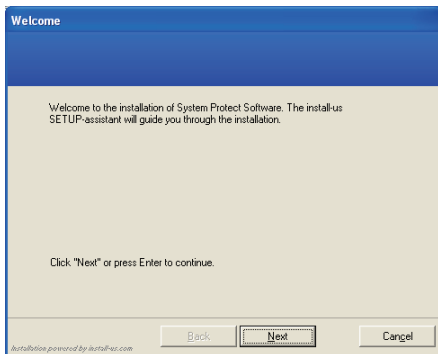
Logs

- UPS Log
- Event Log
- System Log



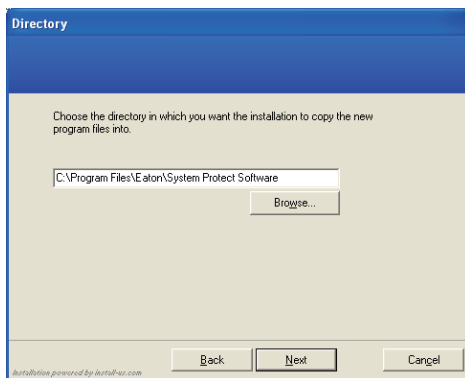
# System Protect Software (Windows) Setting

## 1. Double click the setup.exe

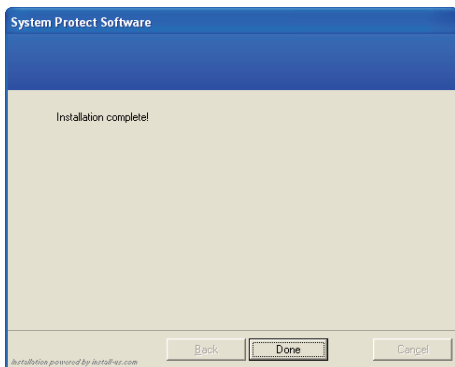




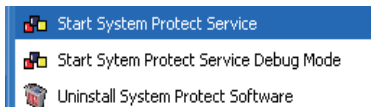
## 2. Display install software screen



## 3. Install complete

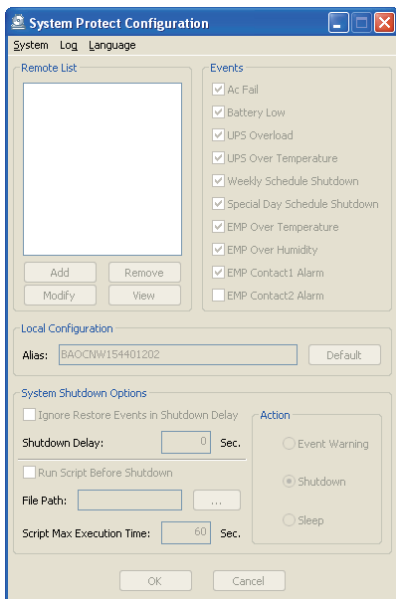


4. Start up from window (start->All Programs->System Protect Software->Start System Protect Service)

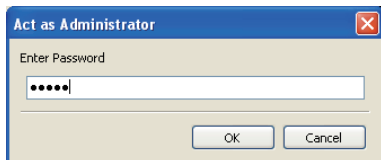


5. Setting the SPS.

Right click the SPS icon shown in system tray and select the "Configuration"

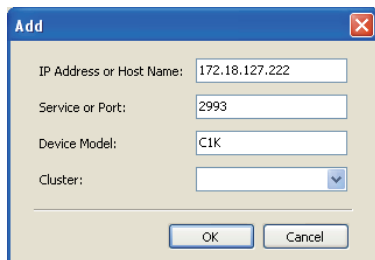


System->act as administrator, and enter the default password “admin”.

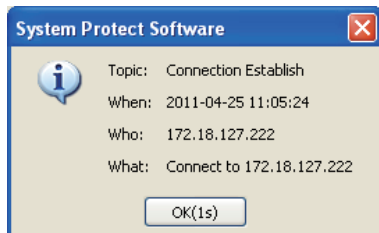


## 6. Add NMC

Click “Add” button, and then entering the popped window. Enter the NMC IP address and device model.



The connection between SPS and NMC has established.



## Other settings:

**System Protect Configuration**

System Log Language

**Remote List**

172.18.127.222(2993) - C1k

Add Remove Modify View

**Events**

- ☒ Ac Fail
- ☒ Battery Low
- ☒ UPS Overload
- ☒ UPS Over Temperature
- ☒ Weekly Schedule Shutdown
- ☒ Special Day Schedule Shutdown
- ☒ EMP Over Temperature
- ☒ EMP Over Humidity
- ☒ EMP Contact1 Alarm
- ☒ EMP Contact2 Alarm

**Local Configuration**

Alias: BAOCNW154401202 Default

**System Shutdown Options**

☐ Ignore Restore Events in Shutdown Delay

Shutdown Delay: 120 Sec.

☐ Run Script Before Shutdown

File Path: ...

Script Max Execution Time: 60 Sec.

**Action**

- ☐ Event Warning
- ☒ Shutdown
- ☐ Sleep

OK Cancel